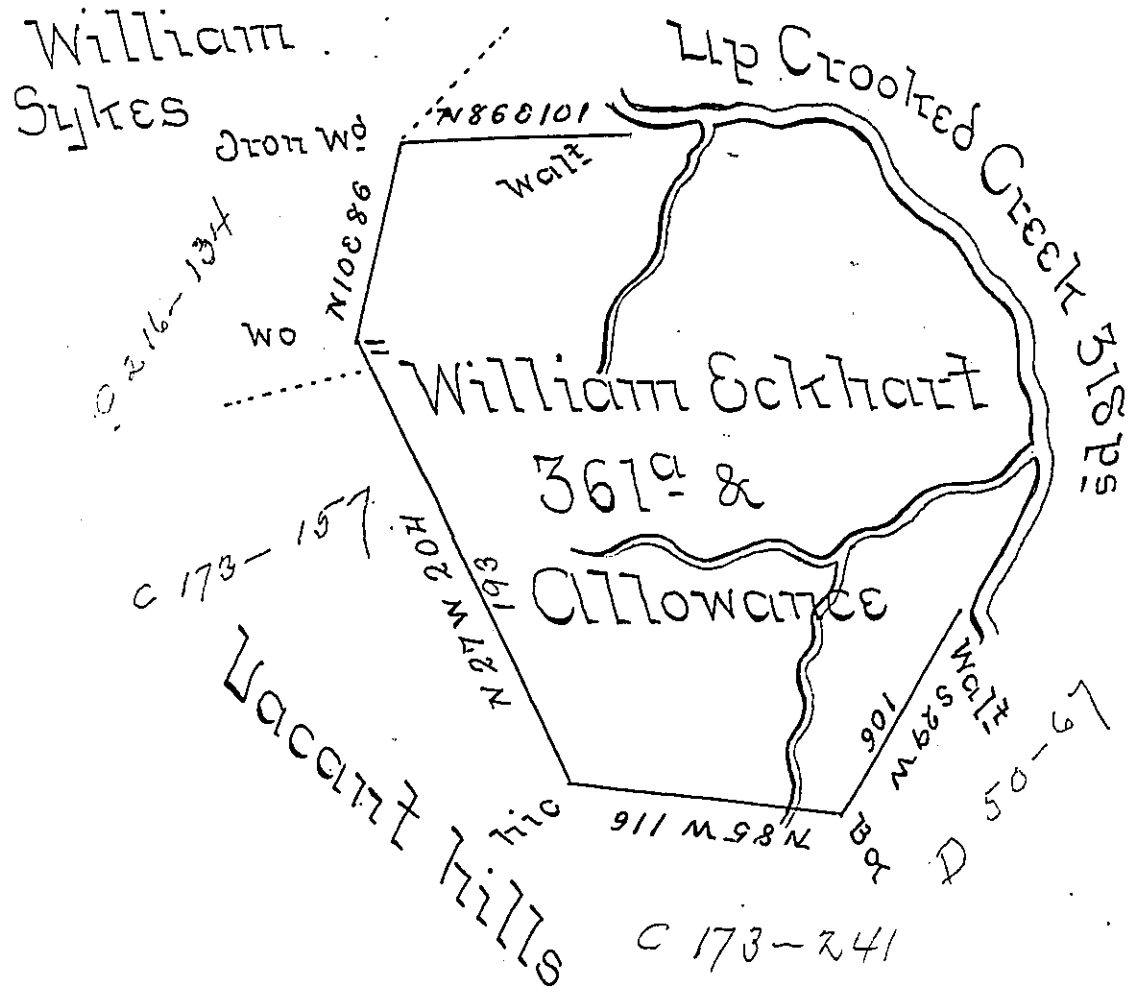


Courses & Distances
Up the Creek

- N 86 E 13
- N 88 E 69
- S 48 E 97
- S 18 E 64
- S 16 W 31
- S 29 W 44



Survey'd to William Eckhart on the 21st Day
of May 1776 The above Described Tract of
Three hundred & Sixty one Acres & Allowance
of Six P. Ct. Situate on the South Side of Crook-
ed Creek adjoining William Sykes in Arm-
strong Township Westmorland County
By Warrant of the 12th Day of February 1776

R. Joshua Elder D.S.

John Lukens Esq^r S. Gen^l

IN TESTIMONY that the above is a copy of the original remaining on file in
the Department of Internal Affairs of Pennsylvania, made
conformably to an Act of Assembly approved the 16th day of
February, 1833, I have hereunto set my Hand and caused
the Seal of said Department to be affixed at Harrisburg,
this thirteenth day of September 1904.

Isaac B. Pearson
Secretary of Internal Affairs.